

## The Bermondsey SquareHOTEL

Bermondsey Square  
Tower Bridge Road  
Southwark  
London SE1 3UN

T 0870 111 2525

F 0870 111 2526

E [info@bermondseysquarehotel.co.uk](mailto:info@bermondseysquarehotel.co.uk)

[bermondseysquarehotel.co.uk](http://bermondseysquarehotel.co.uk)  
[bespokehotels.com](http://bespokehotels.com)

We call it **b<sup>2</sup>**

“bespoke”  
*hotels to wake up to*

- 75 bedrooms
- Four rooftop suites
- Hot tub with views of the London skyline

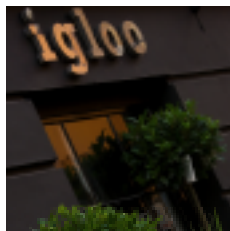
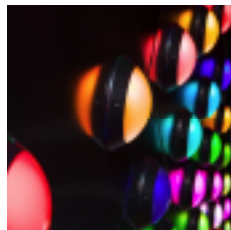
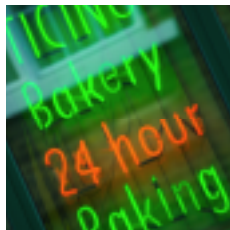
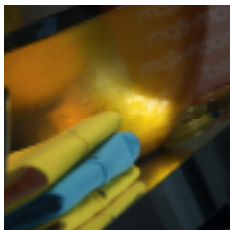
- Alfie's Kitchen, restaurant, bar, deli
- Terrace with 120 alfresco seats

- Two beauty treatment rooms
- Members club

- Conference rooms
- Wi-fi network
- Business centre

# The Bermondsey SquareHOTEL

We call it **b<sup>2</sup>**



The  
**Be there or be  
Square**HOTEL



According to Time Out magazine, "If we were giving out awards for **cool** streets, the gong for **funkiest** newcomer would be scooped by SE1's Bermondsey Street".

**Well** it's even **cooler** and **funkier** now that the Bermondsey Square Hotel and Alfie's Kitchen are here.

No wonder Vogue magazine said in December 2008 "Bermondsey Street — now a destination for South London's most stylish shoppers. The gradual transformation of this mile-long stretch has been nothing short of miraculous."



The all-new Bermondsey Square Hotel (or **b**<sup>2</sup> as we call it) is in a prime location for both business-people and pleasure-pups. It's just a bridge-hop from the City of London.

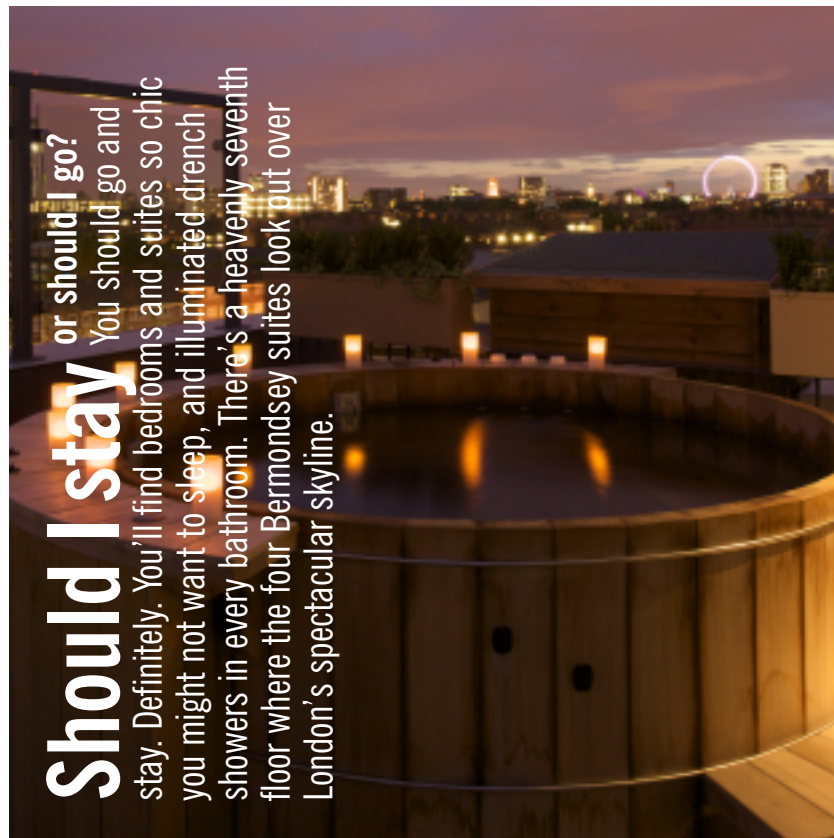
There's a string of fine eateries stretching along the Street, including our very own Alfie's Kitchen. You'll find a couple of London's great markets nearby – Borough Market for food, and Bermondsey Market for antiques. There's fashionable galleries and fashion galore.

Shakespeare's Globe and Sir Norman's glass gherkin are just a stone's throw...on second thoughts, let's just say...they are within easy walking distance.

Come and discover London's **b**<sup>2</sup> – a “**bespoke**” hotel.

## Should I stay or should I go?

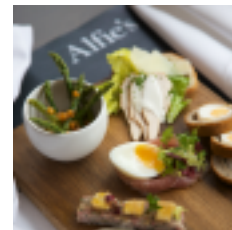
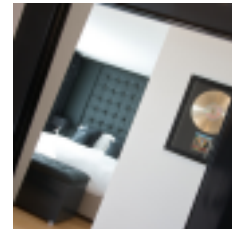
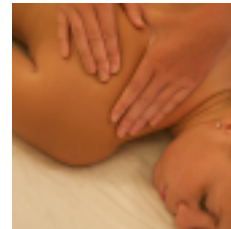
You should go and stay. Definitely. You'll find bedrooms and suites so chic you might not want to sleep, and illuminated-drench showers in every bathroom. There's a heavenly seventh floor where the four Bermondsey suites look out over London's spectacular skyline.





**So** Alfie's Bar and Kitchen with food to go. What's it all about? Somewhere to graze, gaze and laze. A new addition to Bermondsey's burgeoning reputation as the place to play. As the man himself would say, "Anyone in the mood for a little Alfie, straight up?"

and who's responsible for all this?



It's a "bespoke" hotel. The latest addition to an eclectic collection of fine English hotels. And it's part of the super-green £60 million Bermondsey Square regeneration project ([www.bermondseysquare.co.uk](http://www.bermondseysquare.co.uk)) which features, as well as our hotel, 76 apartments, an arthouse cinema, restaurant, offices and shops.